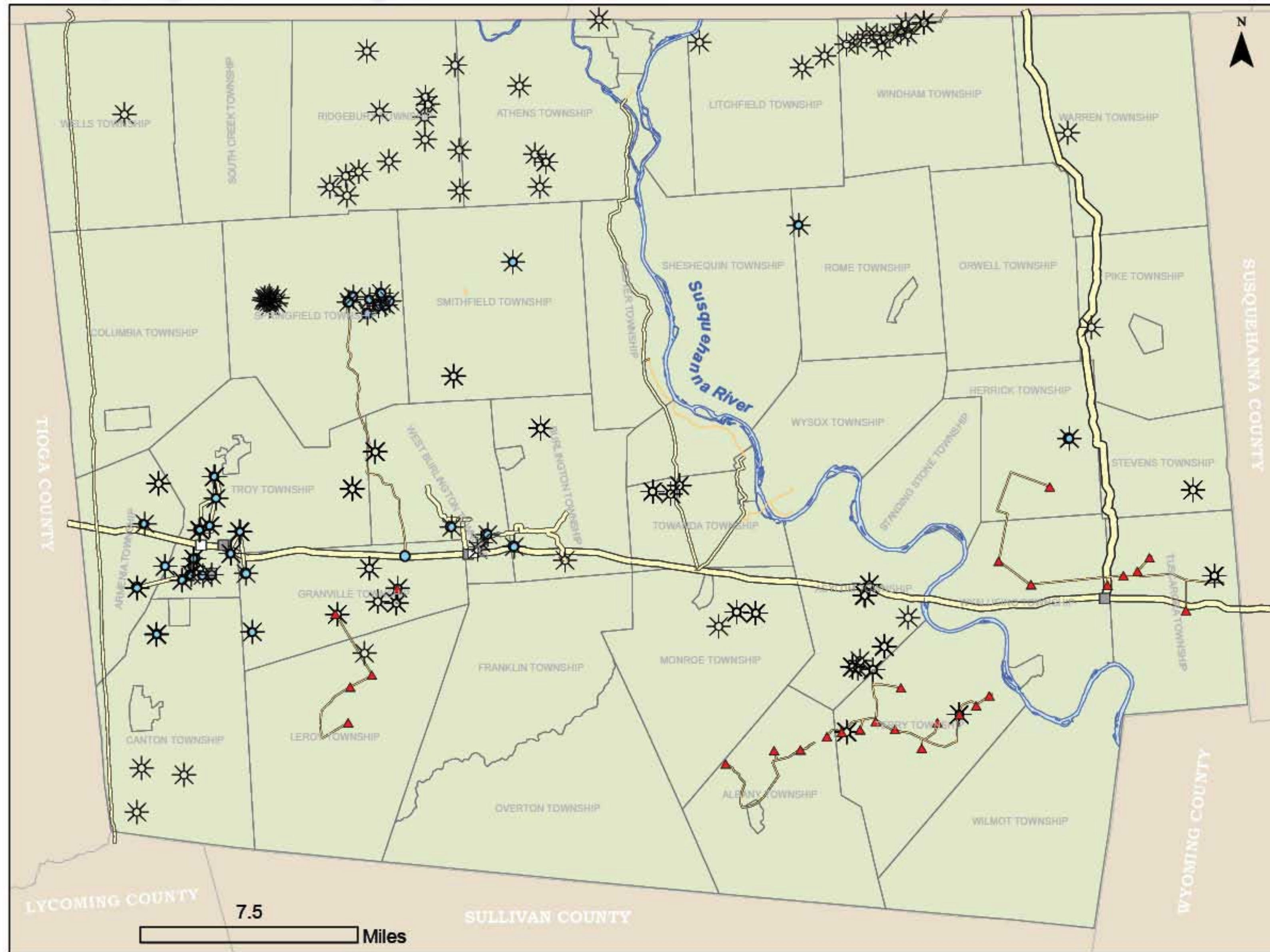


# Natural Gas Development in Bradford County

Comparing and contrasting different data sources

**What should you glean from this map?**

That multiple sources, all supplying data on the same entity, list very different instances.



## Legend

### Gas Lines

- Unknown
- 8 Inches
- 10 Inches
- 12 Inches
- 24 Inches
- 36 Inches

- Meter Site
- Compressor Station

### DEP GIS data

- Gas Well

### 911 Address Wells

- Gas Well

### LandMan Information

- Gas Well



Map Created Using  
Bradford County GIS Data  
Ellen Crowley,  
Community Planner