



# Bradford County Newsletter

*Your Government Working for You!*

## Bradford County Commissioners Proclaim International and National Adult and Family Literacy Week

By: Sherry Spencer, Bradford-Wyoming County



Back row: Commissioners Mark Smith, Daryl Miller, Doug McLinko; Middle row: Marguerite Shaner, Bradford County Library Board President; Vicki Vannan, ESL Instructor; Jeff Singer, Bradford County Library Director, Sherry Spencer, Literacy Program Director; Front row: Doug Newton, former literacy program student. Photo courtesy of Kristy Wesbrook, Morning Times Staff Writer.

Bradford-Wyoming County Literacy Program to improve his basic reading skills. He decided to seek reading help after the choir director at his church gave him a piece of music and asked Doug to sing a solo. Because Doug could not read the words, he declined to sing the solo.

After twelve years with the Literacy Program and three volunteer tutors, Doug was able to read not only words to songs but many other things as well. Marie Pierce of Towanda was one of his tutors and worked with Doug for six years. Doug attended six national literacy conferences as well as state and regional conferences. In 1999, he was selected as one of the top ten Adult Basic and Literacy Education students in Pennsylvania.

In 2006, Doug decided it was time to work toward his goal of getting an associate's degree, and he enrolled in Luzerne County Community College. While at LCCC he received the Outstanding Adult Learner Award for LCCC in March of 2012. He graduated in May 2012, from LCCC

with an Associate's Degree in General Studies. Now Doug is planning to continue his studies and has enrolled in Keystone College at LaPlume to work toward another goal, that of a bachelor's degree.

Doug is very grateful to the Bradford-Wyoming County Literacy Program for its help. He says if it hadn't have been for the Literacy Program and his volunteer tutors, he wouldn't be where he is today. In addition to his tutoring and his college studies, Doug has continued to work for his family run business, Formula One Feeds, since he began in the Literacy Program in 1992.

Established in 1980 as a special project of the Friends of the Bradford County Library, the Bradford-Wyoming County Literacy Program serves both Bradford and Wyoming Counties.

Tutors and students meet once or twice a week at a church, school, or library in communities throughout Bradford and Wyoming Counties. If you know an adult or teenager who needs help with basic reading, writing, or math or wants to learn English as a second language, please tell that person about the Bradford-Wyoming County Literacy Program. The program is free and confidential. If you are interested in becoming a volunteer literacy tutor, please call the literacy program for infor-

### Inside this issue:

Commissioners Proclaim International and National Literacy Week	1
Towanda "YMCA" Healthy Kids Harvest Community Garden Day Campers Lean Healthy Cooking	2
Bradford County Auditors Issue 2010 Report	3
"Many Voices of Agriculture" Agenda	4



mation about upcoming tutor training workshops.

The Bradford-Wyoming County Literacy Program is an accredited affiliate of ProLiteracy and a member agency of the United Way of Bradford County

For further information about the Bradford-Wyoming County Literacy Program, or to register for a workshop, persons should contact Sherry Spencer at 570-297-3375 or email [literacy@bradfordco.org](mailto:literacy@bradfordco.org), Vicki Vannan at 570-836-1677 or by email at [vannanv@bradfordco.org](mailto:vannanv@bradfordco.org). Persons may also visit the Literacy Program website at [www.BWCLiteracyProgram](http://www.BWCLiteracyProgram).

The Bradford County Commissioners have proclaimed the week of September 2 – 8, 2012, to be International Literacy Week, and the week of September 9 – 15, 2012, to be National Adult Education and Family Literacy Week in Bradford County.

The Bradford County Commissioners signed the proclamations at their weekly meeting, which was attended by Sherry Spencer, Program Director of the Bradford-Wyoming County Literacy Program, Vivian Vannan, English as a Second Language instructor; Jeffrey Singer, Director of the Bradford County Library; Marguerite Shaner, President of the Bradford County Library Board; and Douglas Newton, a former literacy student and now a college student.

In 1992, Douglas Newton of Wyalusing enrolled in the

# Towanda “Y” Kids Harvest their Marvelous Garden

By: Lilly Theophanis, Endless Mountains Resource Conservation & Development Council



Above you will see the nicely maintained Healthy Kids Community Garden which is located down the street from the YMCA in Towanda. The reporter noted that there was not one weed visible to the discriminating eye.

Kids Community Garden, ages 5 – 7, recently harvested vegetables, fruit, and herbs with the guidance of Jodie Brandt, Volunteer Garden Coordinator and Volunteer Lindsay Vaughn. The 11 – 12 year olds learned and used their gourmet cooking skills.

Nicole said she got to “see the younger kids pick fresh produce including broccoli, zucchini, potatoes, eggplant, blueberries, summer squash, and herbs such as parsley, basil, garlic, oregano, and dill. Later,

the older kids cooked them and all the kids had a fine dining experience right here at the “Y”. The kids loved it.

“Some of the dishes they enjoyed were zucchini fritters and muffins, broccoli quiche, fresh salsa and bruschetta, eggplant parmesan, garden roasted potatoes, and blueberry muffins.... hmmm, delicious.”

The volunteers have also taught the children about growing their own food with the aid of a set of fact cards provided by Endless Mountains Resource Conservation & Development Council

(RC&D), the six county council that sponsors the Healthy Kids project. Each colorful card shows a picture of a vegetable, herb or fruit and some facts about their value and use.

Nicole added that, “We plan to start a 5<sup>th</sup> and 6<sup>th</sup> grade Healthy Kids after school project. It will incorporate fall growing season veggies to get older kids involved.”

Jill Hoffman, Program Director, is also involved with the Healthy Kids project as head of Day Camp.

An attractive sign displaying the EMRCD Council’s support of this popular community project has been made by Monte Hughey of Towanda, and has been displayed on the side of the garden tools building located near the garden.

The “Y” is the River Valley Regional YMCA, Bradford County Branch, 9 College Avenue, Towanda, PA.



A sign on the garden tool shed displaying the Endless Mountains RC&D Council support for this community project.

## Day Campers Learn Healthy Cooking in the Chesapeake Cafe

By Nicole Siedhof, Program Director of the Bradford County Branch YMCA

The ripening vegetables from the YMCA Community Garden have served as great learning tools for day campers this year. The YMCA has been utilizing its teaching kitchen facilities with the help of garden coordinator Jodie Brandt.

From the garden to their plates, campers have been able to see their hard work transform into yummy treats. The

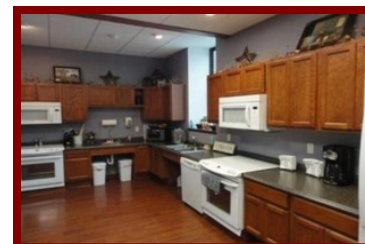
campers are learning that with a little hard work and the right recipes, they can create simply delicious treats that are healthy and easy to make.

On the menu so far, campers have prepared sizzling zucchini cakes, mouth watering zucchini muffins and savory rosemary, and garlic potatoes. They also enjoyed making fresh salsa and bruschetta with the plump juicy toma-

atoes ripe off the vine.

The YMCA would like to thank all of its generous volunteers and supporters who have helped make the teaching kitchen and the community garden possible. The Bradford County Branch YMCA relies on these community supporters.

Thank you to Chesapeake Energy Services, Endless Mountains RC&D Council, and the Towanda Boro.



Chesapeake Café kitchen where the day campers prepped and cooked their food..

# Bradford County Auditors Issue Report for 2010

The auditing office's main focus is to test money keeping records to prove that county money has been collected and spent properly. These duties are performed on behalf of the taxpayers, since it is their money that is involved. Presented here is the audit as presented to the public. To learn more about the Bradford County Auditors visit: [Bradford County Auditors](#) on the Bradford County Website.

## Statement of Change in Fund Balances for Bradford County, PA Year Ending December 31, 2010

WE SUBMIT THE REPORT AS FOLLOWS:  
THAT PURSUANT OF OUR DUTIES AS COUNTY AUDITORS WE MET AT THE COURTHOUSE, TOWANDA, PA ON JANUARY 4, 2010 AND ADJOURNING FROM DAY TO DAY, CONTINUED TO AUDIT AND SETTLE THE ACCOUNTS OF THE COUNTY OFFICES AND OTHERS SUBJECT TO OUR JURISDICTION. OUR REPORT IS HEREWITH ATTACHED, AND WE FILE THE SAME AS OUR FINDINGS, AS PROVIDED BY LAW.

<b>GENERAL FUND</b>	
FUND BALANCE, JANUARY 1, 2010	\$ 7,328,385
Prior Period adjustment	148,630
<b>ADJUSTED BEGINNING BALANCE</b>	<b>\$ 7,477,015</b>
Revenues	
Taxes	\$ 11,144,074
Hotel room tax	269,643
Intergovernmental	7,375,932
Charges for Services	4,351,901
Miscellaneous Revenues	645,208
<b>TOTAL REVENUES</b>	<b>\$23,786,758</b>
Expenditures	
Administration	4,187,359
Judicial	2,973,313
Public Safety	5,344,353
Public Service	8,339,223
Miscellaneous	1,281,153
<b>TOTAL EXPENDITURES</b>	<b>\$22,125,401</b>
Revenues over Expenditures	\$ 1,661,357
 FUND BALANCE, DECEMBER 31, 2010	 \$ 9,138,372

**OTHER GOVERNMENTAL FUNDS** - includes Domestic Relations, Human Services, Drug & Alcohol, Library, Debt Service, Capital Projects and Day Care

FUND BALANCE, JANUARY 1, 2010	\$ 4,253,803
Prior Period Adjustment	\$ 456,947
<b>ADJUSTED BEGINNING BALANCE</b>	<b>\$ 3,796,856</b>
Revenues	\$10,585,185
Expenditures	<u>8,214,990</u>
Revenues over Expenditures	2,370,195
 FUND BALANCE, DECEMBER 31, 2010	 \$6,167,051

<b>MENTAL HEALTH/MENTAL RETARDATION</b>	
<b>ADJUSTED BEGINNING BALANCE</b>	
Revenues	\$ 3,639,206
Expenditures	<u>3,671,027</u>
Expenditures over Revenues	(31,821)
FUND BALANCE, JANUARY 1, 2010	731,765
FUND BALANCE, DECEMBER 31, 2010	\$ 699,944

<b>LIQUID FUELS</b>	
Revenues	\$ 579,128
Expenditures	383,379
Revenues over Expenditures	195,749
 FUND BALANCE, JANUARY 1, 2010	 <u>2,600,889</u>
FUND BALANCE, DECEMBER 31, 2010	\$ 2,796,638

<b>AIRPORT AND COUNTY MANOR</b>	
<b>NET ASSETS JANUARY 1, 2010</b>	<b>\$13,206,374</b>
Prior Period Adjustment	<u>115,813</u>
<b>NET ASSETS BEGINNING (AS RESTATED)</b>	<b>\$13,322,187</b>

Revenues	\$ 13,574,083
Expenditures	<u>12,763,136</u>
Change in Net Assets	810,947
 NET ASSETS DECEMBER 31, 2010	 \$14,133,134

<b>PENSION TRUST FUND</b>	
Revenues	\$ 4,805,486
Expenditures	<u>2,279,445</u>
Revenues over Expenditures	2,526,041

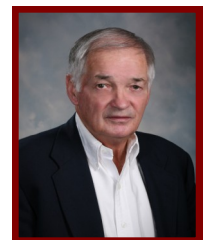
We, the undersigned Auditors of Bradford County, State of Pennsylvania, do hereby certify, that we have prepared the foregoing statement from files, records, cashbooks, cancelled vouchers and accounts of various offices, in conjunction with the independent auditors (Larson, Kellett & Associates) and that it is true to the best of our knowledge and belief. Witness our hands at Towanda, Pennsylvania.

The above statement has been condensed for publication. The complete audit is on file in the Prothonotary's Office. Inquires or explanation of the above audit may be made at the Auditor's office, basement floor of the courthouse.

*Matthew Allen*

*Susan Storch*

*Jeff Warner*





## Quick Updates....

The Bradford County Historical Society is hosting a bicentennial ball at St. Agnes JFK Hall in Towanda on Sat., December 8, 2012, 5:30 p.m. –12:00 p.m. Presale tickets will be available at the Historical Society Annual Meeting, Sun., September 23, 2012. Tickets will be on sale \$50.00 for a single person, \$95.00 per couple on October 1, 2012, at the Historical Society, Bradford County Commissioners' office, Chemung Canal Trust branches, Sayre Public Library, and Grovedale Winery.

## “The Many Voices of Bradford County’s Agricultural Future”

By: Michael Lovegreen. Bradford County Conservation District

In the August issue of the Bradford County Newsletter we featured an article announcing an upcoming event “The Many Voices of Bradford County’s Agricultural Future.”

The program scheduled for November 7, 2012, will be held from

9:00 a.m. – 3:00 p.m. at the Wysox Fire Hall.

You can register by sending your name, phone number, and email address. Include a payment of \$10.00 to cover lunch to: The Bradford County Conservation District, 200 Lake Road, Suite I,

Towanda, PA 18848, or call (570) 265-5539 Extension 6.

In the box below you will find a complete listing of the time and title of the sessions which will be held during the day.

**9:00 a.m. –10:00 a.m. Registration**  
**9:00 a.m.—12:00 p.m. Faces & Facts About Bradford County Agriculture**  
 An ongoing Power Point loop of people, places and activities representing aspects of Bradford County agriculture, including statistics, facts, and trivia about this essential local industry.

**10:00 a.m.—10:15 a.m. “The Many Faces of Bradford County Agriculture”**  
 An introduction to some of the people whose lives are connected to agriculture in the county.

**10:15 a.m.—12:00 p.m. Speaking Out for Bradford County Agriculture**  
 Facilitated dialogues in break-out sessions will encourage participants to share insights and record responses regarding “What is your vision for the future of Bradford County Agriculture and what do we need to do to achieve it?”

**12:00—1:00 Lunch & Speakers**  
 Pennsylvania Secretary of Agriculture George Greig will speak about the economic, cultural and heritage importance of agriculture within the state and county.

**1:00 p.m.—2:00 p.m. Break—Out Reports**

**2:00 p.m.—2:30 p.m. “Crafting the Vision”**  
 Representatives from other communities will share what they have done to develop a strategy renewing, reinvigorating, strengthening, and enhancing agriculture in their region.

**2:30 p.m.—3:00 p.m. “Charting the Future”**  
 A discussion on how to create the desired future of agriculture in Bradford County as well as an opportunity for participants to express their interest and level of participation.

## County Government Directory

Accounting	265-1723	Human Services	265-1760
Airport	265-4900	Jury Commissioners	265-1732
Assessment	265-1714	Library	297-2436
Area Agency on Aging	295-6121	Penn State Cooperative Extension	265-2896
Auditors	265-1716	Probation	265-1706
Bradford County Manor	297-4111	Prothonotary	265-1705
Collections	265-1746	Public Defender	265-1713
Commissioners	265-1727	Register & Recorder	265-1702
Conservation District	265-5539	Sheriff	265-1701
Coroner	297-0720	Veterans Affairs	265-1704
Correctional Facility	297-5047	Victim Witness	265-1759
Courts	265-1707	911 Center	265-9101
District Attorney	265-1712	District Judge (Troy)	297-3880
Domestic Relations	265-1718	District Judge (Towanda)	265-5057
Elections	265-1717	District Judge (Wysox)	265-9393
Emergency Management	265-5022	District Judge (Athens)	888-6324
Grants	265-4193		
Hearing Master	265-1711		
Human Resources	265-1722		



### Bradford County Court House

301 Main St.  
Towanda, PA 18848

Phone: 570-265-1727

Fax: 570-265-1729

[www.bradfordcountypa.org](http://www.bradfordcountypa.org)