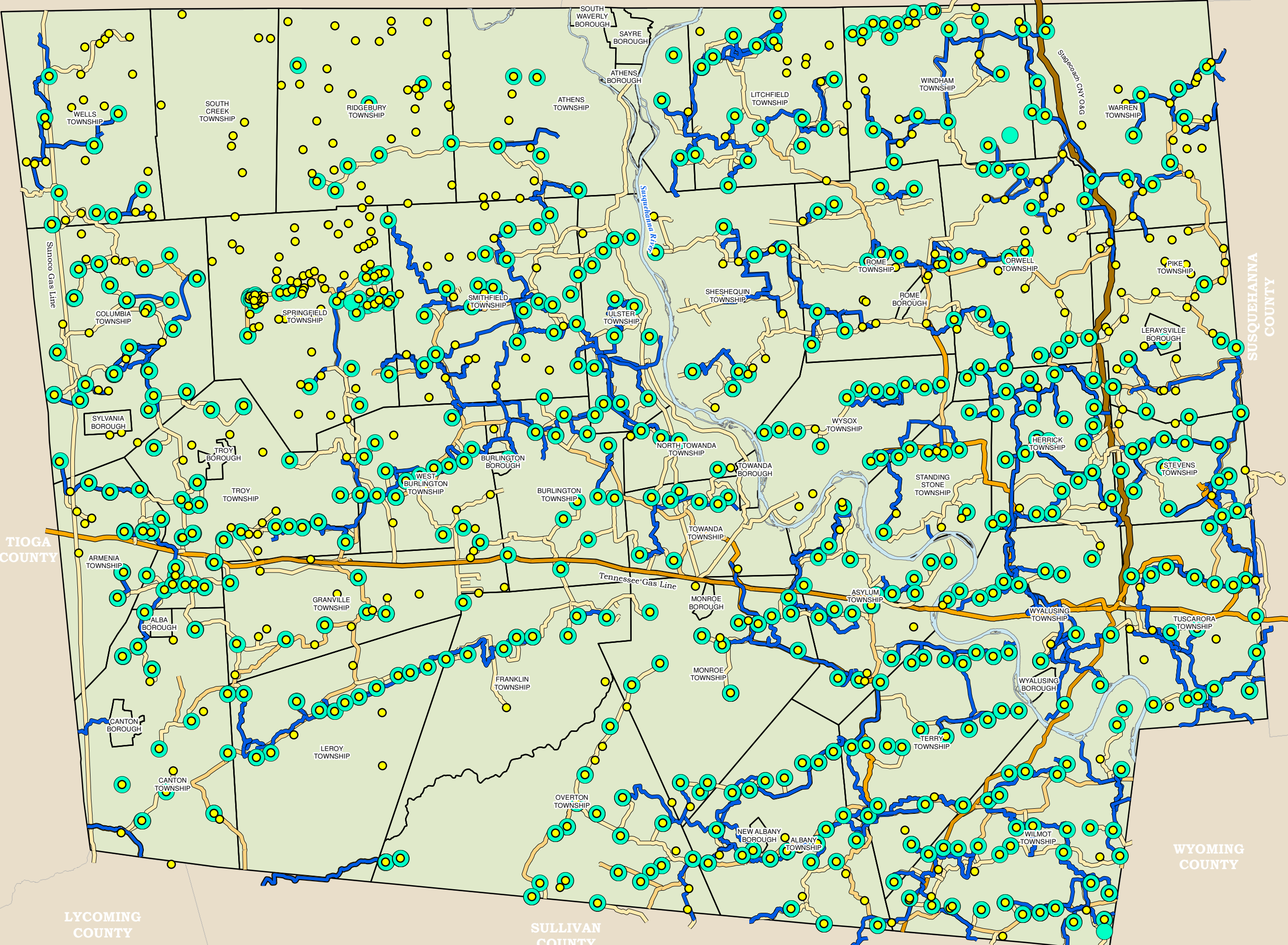


DATA SOURCE COMPARISON



Gas Wells

- All Received Well Permits and Notices
- Active DEP Wells April 2015

Water Lines

- Water Lines

Gas Lines

PIPE SIZE

- Unknown
- 2
- 4
- 6
- 8
- 10
- 12
- 16
- 18
- 20
- 21
- 24
- 30
- 36

Data is collected from various sources. DEP Data is downloaded quarterly and is the basis for all tracking of gas industry activity. In the period between the quarterly downloads, permits account for most of the new information collected.

All available gas industry related sites are incorporated into a separate database maintained by the county in order to provide 911 addresses to all sites. The map to the left shows the static download from DEP in green and the additional data that has been added

